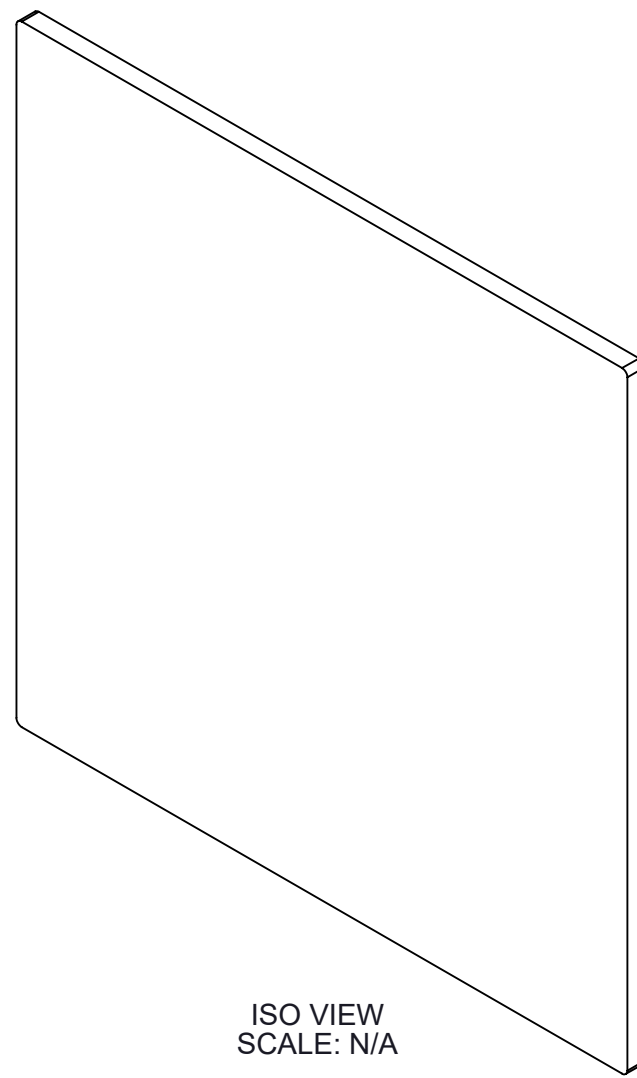
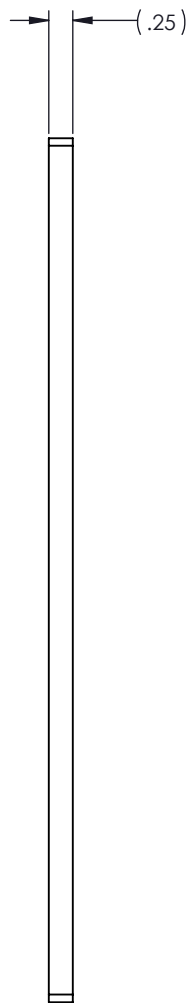
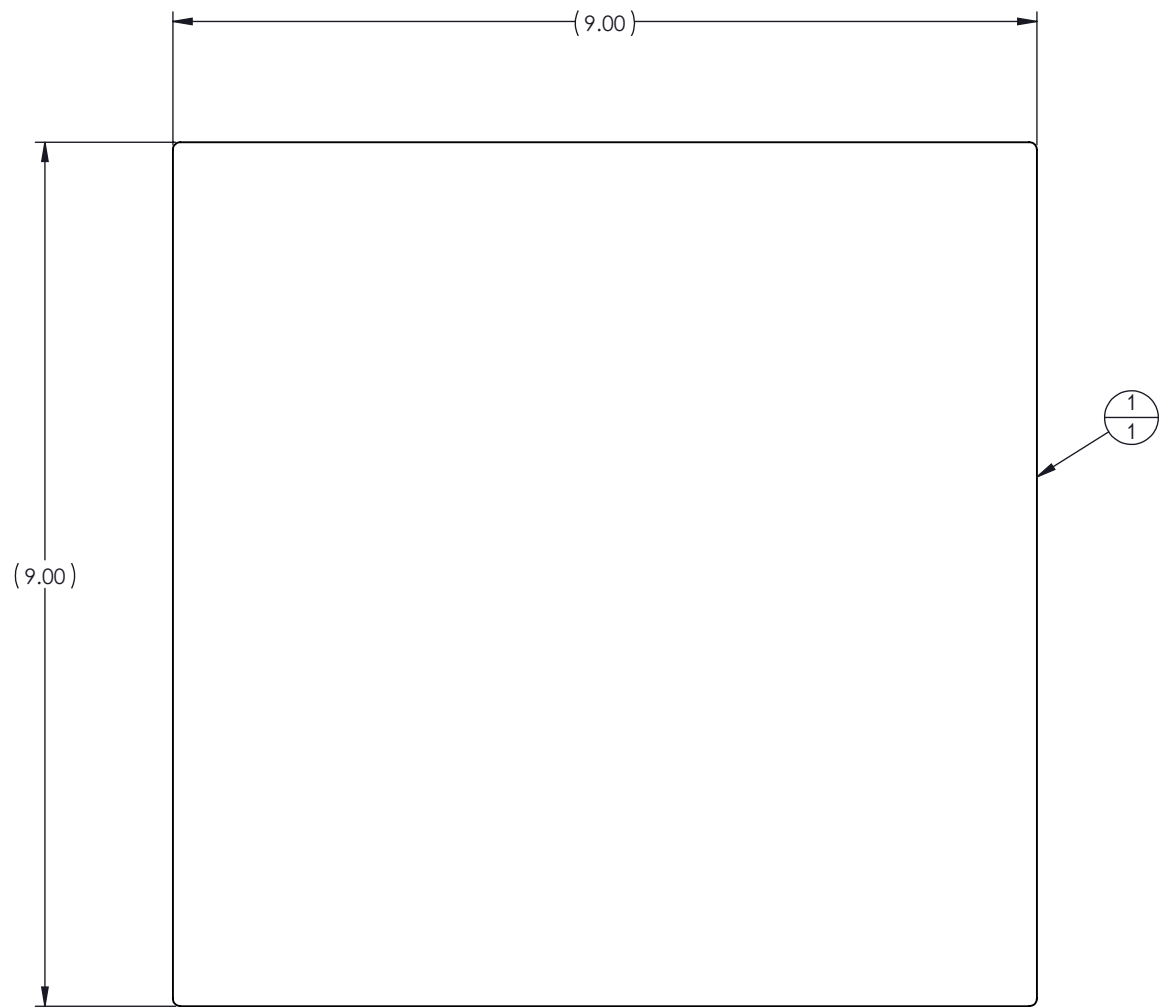



REV.	DESCRIPTION	DATE	APPROVED
A	INITIAL RELEASE	10/12/2023	A. CLARK



ISO VIEW  
SCALE: N/A

ITEM NO.	QTY.	PART NUMBER	DESCRIPTION
1	1	50-00002	CGH, 9X9

THIS DOCUMENT CONTAINS INFORMATION WHICH IS PROPRIETARY TO ARIZONA OPTICAL METROLOGY. NO REPRODUCTION OR PUBLICATION OF THIS DOCUMENT, IN WHOLE OR IN PART, SHALL BE MADE WITHOUT WRITTEN AUTHORIZATION FROM ARIZONA OPTICAL METROLOGY.	TOLERANCES				ARIZONA OPTICAL METROLOGY 2420 W Ruthrauff Rd #160 TUCSON, AZ 85705 Phone: 520-833-5761 Email: info@CGHnulls.com
	PLACES IN DIMENSION	.X	.XX		
UNLESS OTHERWISE SPECIFIED: ALL DIMENSIONS ARE IN INCHES AND APPLY AFTER COATING/PLATING.	DIMENSIONS	±.05	±.01	±.005	TITLE <b>CGH, 9-IN SUBSTRATE, UNMOUNTED</b>
DRAWING STANDARD PER: ASME Y14.5-2009 INTERPRET WELDING SYMBOLS PER AWS A2.4	ANGLES	±.5°			
REMOVE ALL BURRS AND EDGE BREAK .01" MAXIMUM	FRACTIONS	±1/32			SIZE <b>B</b>
DO NOT SCALE DRAWING	MATERIAL: N/A	HEAT TREAT: N/A			DWG NO. <b>CGH-S9-C0</b>
	FINISH: N/A	DESIGN BY: A. CLARK	DATE: 2/27/2023	REV. <b>A</b>	
		DRAWN BY: A. CLARK	DATE: 2/27/2023	SCALE 1:2	
		CHECKED BY: A. CLARK	DATE: 10/12/2023	WEIGHT 1.6 LBS	
				SHEET 1 OF 1	